

### Benefits

- High surgical flexibility with various head sizes and neck lengths
- Adaptation to a new stem taper or slight damaged stem taper
- A low-wear bearing option in revision cases
- Diamond-like hardness to resist third-body wear
- Unaffected range of motion with the sleeve

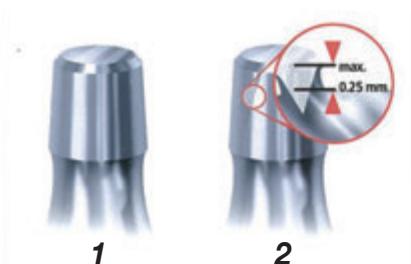
# BIOLOX<sup>®</sup> OPTION

Modular Head System

### Attentions for Use

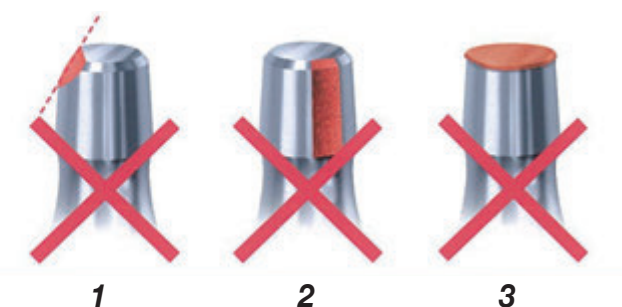
- The 12/14 sleeve can only be compatible with UOC 12/14 femoral stem systems
- To avoid any unnecessary damage to stem taper during head removal in revision THA
- Careful inspection of stem taper to make sure utilization of this system
- To verify the selection of a proper diameter and neck length
- Assembling head and sleeve in the packaging shell before final positioning

### Tolerable condition



1. Undamaged stem taper
2. Slight scratches (less than 0.25 mm in width)

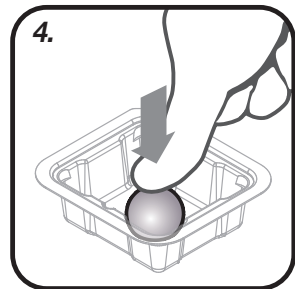
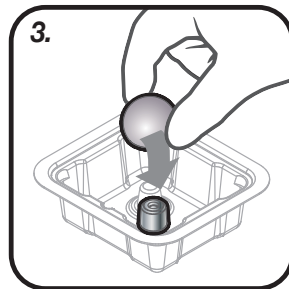
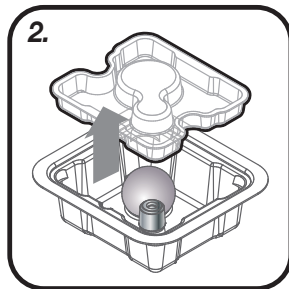
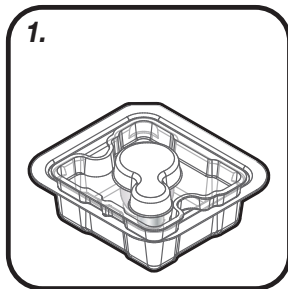
### Intolerable condition



1. Heavily scratched taper
2. Taper with broad truncation
3. Crushed taper

## Assembling of BIOLOX® OPTION Head System :

- BIOLOX OPTION Ceramic head and the sleeve are packaged together.
- Place the ceramic head onto the sleeve while applying a manual pressure. Care should be taken to axially align the head and the sleeve.
- After the modular head system is set, engage it onto the stem taper by using a plastic head impactor only.



## Order Information

### Heads

Catalog No.	Description
1203-7028	Ø 28 mm, S / -2
1203-7228	Ø 28 mm, M / +1
1203-7428	Ø 28 mm, L / +5
1203-7628	Ø 28 mm, XL / +8
1203-7032	Ø 32 mm, S / -2
1203-7232	Ø 32 mm, M / +1
1203-7432	Ø 32 mm, L / +5
1203-7632	Ø 32 mm, XL / +8
1203-7036	Ø 36 mm, S / -2
1203-7236	Ø 36 mm, M / +1
1203-7436	Ø 36 mm, L / +5
1203-7636	Ø 36 mm, XL / +8
1203-7040	Ø 40 mm, S / -2
1203-7240	Ø 40 mm, M / +1
1203-7440	Ø 40 mm, L / +5
1203-7640	Ø 40 mm, XL / +8

### Head trials

Catalog No.	Description
1203-8028-RA	Ø 28 mm, S / -2
1203-8228-RA	Ø 28 mm, M / +1
1203-8428-RA	Ø 28 mm, L / +5
1203-8628-RA	Ø 28 mm, XL / +8
1203-8032-RA	Ø 32 mm, S / -2
1203-8232-RA	Ø 32 mm, M / +1
1203-8432-RA	Ø 32 mm, L / +5
1203-8632-RA	Ø 32 mm, XL / +8
1203-8036-RA	Ø 36 mm, S / -2
1203-8236-RA	Ø 36 mm, M / +1
1203-8436-RA	Ø 36 mm, L / +5
1203-8636-RA	Ø 36 mm, XL / +8
1203-8040-RA	Ø 40 mm, S / -2
1203-8240-RA	Ø 40 mm, M / +1
1203-8440-RA	Ø 40 mm, L / +5
1203-8640-RA	Ø 40 mm, XL / +8

\*BIOLOX® delta is the registry trademark of Ceramtec AG.



Each Step We Care



www.uoc.com.tw

#### Contact Us

##### ■ Taiwan

**United Orthopedic Corporation**  
12F, No. 80, Sec. 1, Chenggong Rd, Yonghe Dist.,  
New Taipei City 23452, Taiwan  
Tel: +886 2 2929 4567 Fax: +886 2 2922 4567

##### ■ China

**United Medical Instrument Co. Ltd.**  
Room 402, Building 7, No.697, Ling Shi Road,  
Shanghai, China, 200072  
Tel: +86 21 3661 8055 Fax: +86 21 6628 3031

##### ■ Japan

**United Biomech Japan Inc.**  
Ginyo Bldg 4th floor, 2-9-40 Kitasaiwai, Nishi-Ku  
Yokohama City, Kanagawa, 220-0004, Japan  
Tel: +81 45 620 0741 Fax: +81 45 620 0742

##### ■ Europe

**UOC (Suisse) SA**  
Avenue Général Guisan 60A, 1009 Pully, Switzerland.  
Tel: +41 (0) 21 634 70 70 Fax: +41 (0) 21 634 70 76

##### UOC (France)

21, Rue de la Ravinelle, 54000 Nancy, France.  
Tel: +33 (0) 3 83 23 39 72 Fax: +33 (0) 3 83 23 39 10

##### ■ EU Representative

**mdi Europa GmbH**  
Langenhagener Strasse 71,  
30855 Langenhagen, Germany  
Tel: +49 511 3908 9530 Fax: +49 511 3908 9539

##### ■ USA

**UOC USA Inc.**  
20 Fairbanks, Suite 173, Irvine, CA 92618  
Tel: +1 949-328-3366 Fax: +1 949-328-3367