

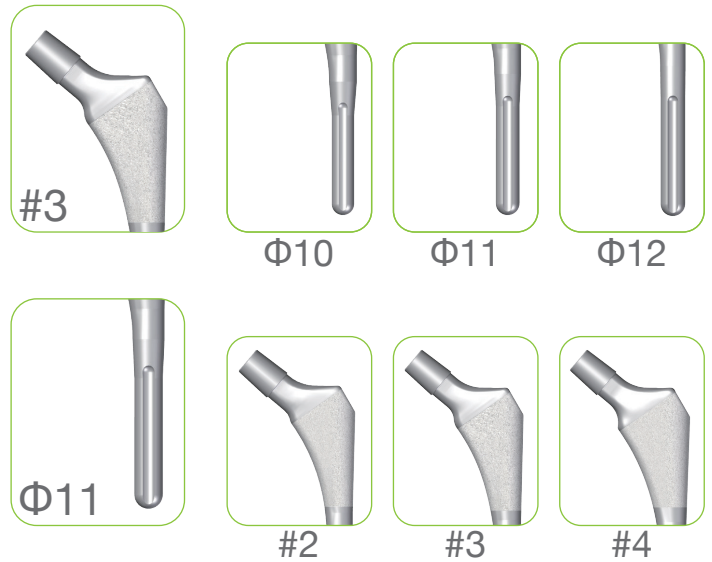


U2<sup>™</sup> Hip System  
HA Stem

# Matrix Design - Maximized Fit and Fill

The Matrix design addresses both proximal and distal canal fit and fill in order to facilitate load transfer<sup>1</sup> and achieve excellent initial stability<sup>2</sup>.

Proximal Size (#, Size)	#7							#7
	#6					#6	#6	
	#5				#5	#5		
	#4			#4	#4			
	#3		#3	#3	#3			
	#2		#2	#2				
	#1		#1					
	#0	#0						
		8	9	10	11	12	13	14
	Distal Diameter (Φ, mm)							



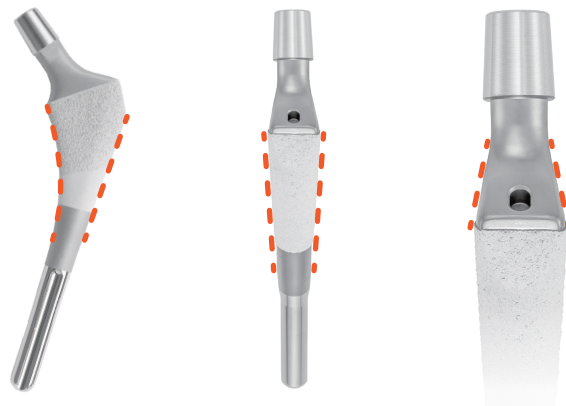
## Polished Fluted Distal End

Avoid stress shielding and increase torsional stability

### References

1. Claus AM et al. Fractures of the greater trochanter induced by osteolysis with the anatomic medullary locking prosthesis. J Arthroplasty. 2002 Sep;17(6):706-12.
2. Mai KT et al. Cementless femoral fixation in total hip arthroplasty. Am J Orthop. 2010 Mar;39(3):126-30.

## 12/14 Morse Taper



## Tri-wedge Design

Provide axial and rotational stability and facilitate proximal load transfer<sup>3</sup>



## Instrument

Quick-connected holder offers easy-to-use instrument to facilitate surgical efficiency.

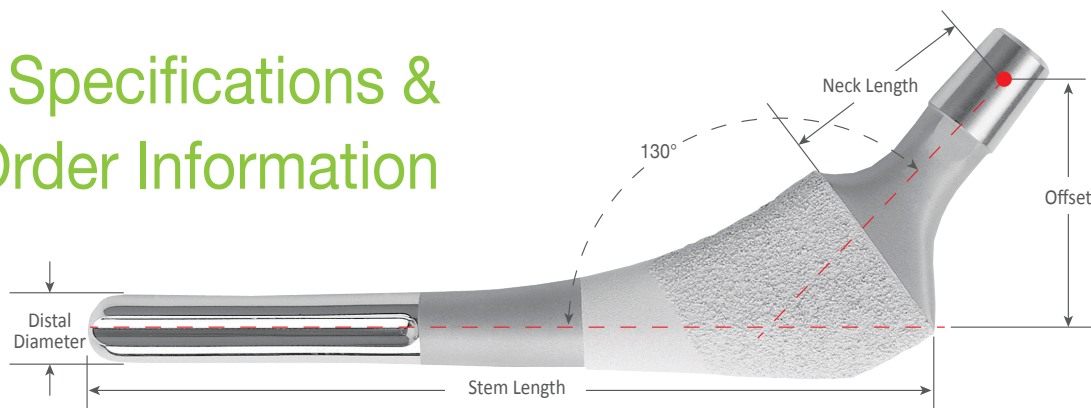


## Extended Dual Coating – Ti 500 µm plus HA 80 µm

Extended proximal 2/5 Ti plasma spray with HA dual coating facilitates biological fixation.

3. Mallory TH et al., Minimal 10-year results of a tapered cementless femoral component in total hip arthroplasty. J Arthroplasty. 2001 Dec;16(8 Suppl 1):49-54.

# Stem Specifications & Order Information



## With Metal Head

Cat. No.	Stem Size	Distal Diameter	Stem Length	Offset(mm) when head/neck prosthesis is :										Neck Length(mm) when head/neck prosthesis is :									
				26mm				28/32/36mm						26mm				28/32/36mm					
				+0	+3	+6	+9	-3	+0	+2.5	+5	+7.5	+10	+0	+3	+6	+9	-3	+0	+2.5	+5	+7.5	+10
1104-1001	#0	8	120	30	32	34	36	28	30	32	34	36	38	27	30	33	36	24	27	29	32	34	37
1104-1012	#1	9	126	35	37	39	41	34	36	38	40	42	44	30	33	36	39	27	30	32	35	37	40
1104-1023	#2	10	132	36	38	41	43	34	36	38	40	42	44	30	33	36	39	27	30	32	35	37	40
1104-1033	#3	10	132	39	41	43	45	37	39	41	43	45	47	34	37	40	43	31	34	36	39	41	44
1104-1024	#2	11	138	36	38	41	43	34	36	38	40	42	44	30	33	36	39	27	30	32	35	37	40
1104-1034	#3	11	138	39	41	43	45	37	39	41	43	45	47	34	37	40	43	31	34	36	39	41	44
1104-1044	#4	11	138	39	41	43	45	37	39	41	43	45	47	34	37	40	43	31	34	36	39	41	44
1104-1035	#3	12	145	39	41	43	45	37	39	41	43	45	47	34	37	40	43	31	34	36	39	41	44
1104-1045	#4	12	145	39	41	43	45	37	39	41	43	45	47	34	37	40	43	31	34	36	39	41	44
1104-1055	#5	12	145	43	45	47	48	40	43	45	47	48	50	38	41	44	47	35	38	41	43	47	49
1104-1056	#5	13	152	43	45	47	48	40	43	45	47	48	50	38	41	44	47	35	38	41	43	47	49
1104-1066	#6	13	152	45	47	49	51	43	45	47	49	51	53	41	44	47	50	38	41	43	46	48	51
1104-1067	#6	14	158	45	47	49	51	43	45	47	49	51	53	41	44	47	50	38	41	43	46	48	51
1104-1078	#7	15	166	45	47	49	51	43	45	47	49	51	53	41	44	47	50	38	41	43	46	48	51

## With delta Ceramic Head

Cat. No.	Stem Size	Distal Diameter	Stem Length	Offset(mm) when head/neck prosthesis is :								Neck Length(mm) when head/neck prosthesis is :											
				28mm		32/36/40mm		32mm		36/40mm		28mm		32/36/40mm		32mm		36/40mm					
				-2.5	+1	+4	-3	+1	+5	+8	+9	-2.5	+1	+4	-3	+1	+5	+8	+9				
1104-1001	#0	8	120	28	31	34	28	31	34	36	37	25	28	31	24	28	32	35	36				
1104-1012	#1	9	126	33	36	38	32	36	39	41	42	27	31	34	27	31	35	38	39				
1104-1023	#2	10	132	34	37	40	34	37	40	42	43	27	31	34	27	31	35	38	39				
1104-1033	#3	10	132	37	40	43	37	40	43	45	46	31	35	38	31	35	39	42	43				
1104-1024	#2	11	138	34	37	40	34	37	40	42	43	27	31	34	27	31	35	38	39				
1104-1034	#3	11	138	37	40	43	37	40	43	45	46	31	35	38	31	35	39	42	43				
1104-1044	#4	11	138	37	40	43	37	40	43	45	46	31	35	38	31	35	39	42	43				
1104-1035	#3	12	145	37	40	43	37	40	43	45	46	31	35	38	31	35	39	42	43				
1104-1045	#4	12	145	37	40	43	37	40	43	45	46	31	35	38	31	35	39	42	43				
1104-1055	#5	12	145	41	44	46	40	44	47	49	50	36	39	42	35	39	43	46	47				
1104-1056	#5	13	152	41	44	46	40	44	47	49	50	36	39	42	35	39	43	46	47				
1104-1066	#6	13	152	43	46	48	43	46	49	51	52	39	42	45	38	42	46	49	50				
1104-1067	#6	14	158	43	46	48	43	46	49	51	52	39	42	45	38	42	46	49	50				
1104-1078	#7	15	166	43	46	48	43	46	49	51	52	39	42	45	38	42	46	49	50				

\*BIOLOX® delta is the registry trademark of Ceramtec AG.



Each Step We Care



www.uoc.com.tw

### Contact Us

- Taiwan - United Orthopedic Corporation**  
 12F, No. 80, Sec. 1, Chenggong Rd, Yonghe Dist.,  
 New Taipei City 23452, Taiwan  
 Tel: +886 2 2929 4567 Fax: +886 2 2922 4567
- Japan - United Biomech Japan Inc.**  
 Ginyo Bldg 5th floor, 2-9-40 Kitasaiwai, Nishi-Ku  
 Yokohama City, Kanagawa, 220-0004, Japan  
 Tel: +81 45 620 0741 Fax: +81 45 620 0742
- USA - UOC USA Inc.**  
 20 Fairbanks, Suite 173, Irvine, CA 92618  
 Tel: +1 949 328 3366 Fax: +1 949 328 3367

- China - United Medical Instrument Co. Ltd.**  
 Room 402, Building 7, No.697, Ling Shi Road,  
 Shanghai, China, 200072  
 Tel: +86 21 3661 8055 Fax: +86 21 6628 3031
- EU Representative**  
**mdi Europa GmbH**  
 Langenhagener Strasse 71,  
 30855 Langenhagen, Germany  
 Tel: +49 511 3908 9530 Fax: +49 511 3908 9539

- Europe**  
**UOC (Suisse) SA**  
 Avenue Général Guisan 60A, 1009 Pully, Switzerland  
 Tel: +41 21 634 70 70 Fax: +41 21 634 70 76
- UOC (France) SAS**  
 7 Allée des Peupliers, 54180 Houdemont, France  
 Tel: +33 3 83 23 39 72 Fax: +33 3 83 23 39 10
- UOC (UK) Limited**  
 Baileys Barn, Pimlico Farm, Austrey Lane,  
 No Mans Heath, Warwickshire, B79 0PF, UK  
 Tel: +44 1827 214773